

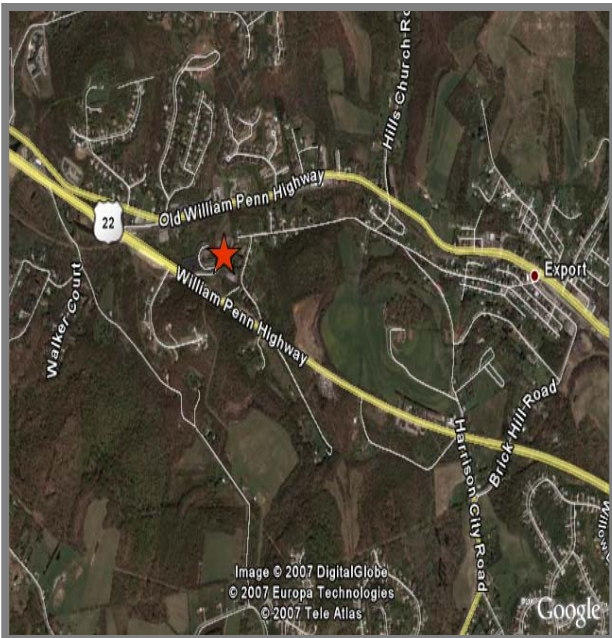
One Triangle Lane, US Route 22, Export PA 15632

Available for Lease Office Space

Technology Triangle, Bldg 1 - 1st fl	9,730 S.F.
Technology Triangle, Bldg 2 - 1st fl	5,656 S.F.
Technology Triangle, Bldg 2 - 2nd fl	4,787 S.F.
Technology Triangle, Bldg 2 - 3rd fl	12,224 S.F.

Great Location

- Great visibility from Rt. 22
- 5+/- miles to I-376, I-76 and PA66
- Class A Office Complex
- Beautiful Natural Setting
- High traffic counts
- 25 minute drive to downtown



For further information, please contact:
David Sarver, Vice President of Development
dsarver@sampsonmorrisgroup.com

SAMPSON · MORRIS GROUP

2500 Eldo Road, Monroeville PA 15146 p 412.374.1060 f 412.374.1810
SampsonMorrisGroup.com